

# CNC Freight Services Sdn. Bhd.

*Competent & Committed*

ELEVENTH EDITION NEWSLETTER

JANUARY 2016 – DECEMBER 2016

Welcome, dear reader. We are delighted to share our involvement in some of the interesting shipments of 2016 as well as highlight our participation in annual network meetings namely, WCA at Abu Dhabi, GPLN at Brussels, and THLG at Antwerp. In spite of the downturn impacting the transport industry, we hope 2017 will be a more prosperous year for all our clients and business associates. We would also like to take this opportunity to thank all our customers and partners for your continuous support and hope you enjoy reading our yearly newsletter! – Patrick Lee.

## Ulu Jelai HEP: Return of Temporary Imported Equipment – Q1 & Q2, 2016.



Caterpillar excavator after being rolled-on at Ulu Jelai HEP jobsite.



Astra dump truck loaded on lowbed trailer at jobsite.



Jumbo Tamrock, stuffed and lashed on 40'FR at Port Klang.



Deici excavators loaded at Port Klang, awaiting lashing.

Having completed the Ulu Jelai HEP project, CNC worked on demobilizing construction equipment out of jobsite which was mostly temporary imported. In Q1 & Q2 2016, CNC shipped 55 special containers consisting of numerous excavators, rock drilling vehicles, dump trucks, dozers, and rough terrain cranes to various locations in Europe, South America & Africa.

**Road Freight: Cross Border Trucking of Silos from Malaysia to Thailand – Q1, 2016.**



Loading at origin fabshop was done via overhead gantry cranes in tandem.



Transloading at Bukit Kayu Hitam (Malaysia – Thailand border).



Transfer of Storage Silo onto Thai registered flat-bed truck.



CNC & trucking team upon completing loading of last silo at BKH.

<b>Cargo</b>	: 4 units Storage Silos
<b>Place of Loading</b>	: Nilai, Malaysia
<b>Port of Discharge</b>	: Samutprakarn, Thailand
<b>Total Shipments</b>	: 4 trips in 2 convoys
<b>Total Volume</b>	: 1024 cbm
<b>Total Gross Weight</b>	: 52 M/Tons

In Q1 of 2016, CNC Freight Services collaborated with fellow GPLN member, The Freight to transport 4 units of Storage Silos from Nilai, Malaysia to food factory in Samutprakarn, Thailand.

The silos measured 18.70 meters long and with a 3.70 meter diameter.

CNC staff worked diligently from the moment of loading at origin fabrication shop, escorting the cargo from Nilai to Bukit Kayu Hitam (Malaysian's border to Thailand), monitoring the transloading from Malaysian registered truck to Thai registered truck, as well as border clearance before handing the convoy over to The Freight who ensured the convoy's eventual and successful arrival at consignee's food factory in Samutprakarn.

The door to door trucking took 4 days & 3 nights per convoy to complete.

**Barging Freight: Port Klang, Malaysia to Palembang, Indonesia – July, 2016.**



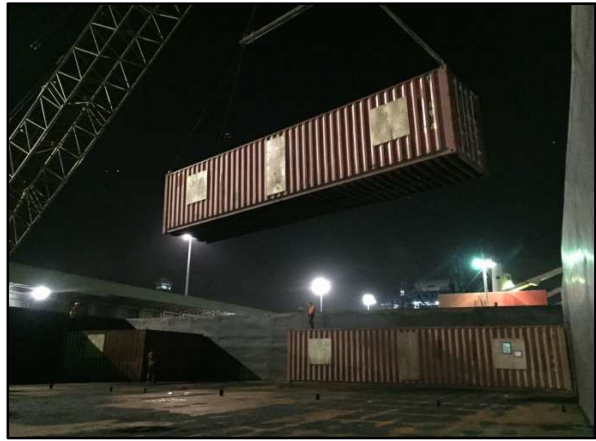
Survey of Glycol Reboiler Skid at Gebeng, Kuantan fabrication shop.



Loading of Glycol Slump Drum onto barge via 150 ton mobile crane.



Dehydration units loaded onto 280 feet barge.



Cabin containers loaded at Westport terminal via 250 MT crane.

<b>Scope of Work</b>	: Door to Port
<b>Port of Loading</b>	: Port Klang, Malaysia
<b>Port of Discharge</b>	: Palembang, Indonesia
<b>Cargo</b>	: Dehydration Units
<b>Total Packages</b>	: 46packages / 1929 cbm
<b>Total Gross Weight</b>	: 238 M/Tons

In October 2016, CNC Freight Services Sdn. Bhd. was awarded by customer to arrange a door-to-port shipment of Dehydration Units from Gebeng, Kuantan to Palembang port, Indonesia via barge. Loading was performed at Port Klang jetty & Westport terminal, Port Klang.

All breakbulk items were at first loaded on barge at Port Klang jetty. After the breakbulk items were lashed and sea-fastened, the 280 foot barge then berthed at Westport terminal to load the remaining SOC cabins as preference had to be given to Westport terminal for container loadings.

Through careful supervision and close coordination between with shipper & CNC, the cargoes were delivered and handed over smoothly to consignee in good condition.

**Network Meetings & Social Events.**



L to R: Khoo & Zimi at THLG, Antwerp – May, 2016.



Richard (L) at AICL's booth – May, 2016.



Hiking trip: Our Project Manager, Khoo (R) at Mount Kinabalu summit.



Congratulations to Richard Lee our Business Development Manager on his wedding last 14<sup>th</sup> January 2017.

**Company Dinner.**



Staff & family of CNC striking a pose for our annual company dinner last January 2017.