

CNC Freight Services Sdn. Bhd.

Competent & Committed

TENTH EDITION NEWSLETTER

JANUARY 2015 – DECEMBER 2015

Dear reader, As always, we are delighted to highlight and share our involvement in some of the interesting shipments in 2015. In spite of the slowdown in business, we continue to maintain our participation in all our networks annual meeting which was WCA at Hong Kong, GPLN at Bangkok, Thailand WWPC at Fuengirola, Spain and THLG at Antwerp, Belgium. We would also like to thank all our customers and partners for your continuous support and hope you enjoy reading our newsletter! – Patrick Lee.

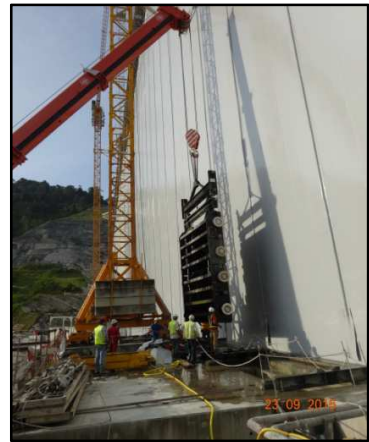
Ulu Jelai HEP, Lifting of Water Gate & Return of Equipment – Q4, 2015.



300-ton Demag crane positioned at site.



Water Gate carefully being hooked-on.



Lifting of Water Gate.



Iveco Astra heavy duty dump trucks lashed and secured at Port Klang.



Sandvik Tamrock jumbo on Flat-Racks prior returning to Italy.

CNC supplied a 300 crane hydraulic crane for lifting Water Gate to install in Ulu Jelai Dam. The crane was further utilized for installation of Penstock Pipe line on the Dam.

With Ulu Jelai HEP project nearing to its completion, we are now moving into the phase of returning the construction equipment which was mostly temporarily imported. In September 2015, we shipped approximately 20 special containers consisting of various excavators, rock drilling machines, dump trucks and a shaft gantry crane back to Italy.

Pedestal Cranes from Malaysia to China – Q3 & Q4, 2015.



Mast assembly being stuffed at shipper's premise.



Boom top after lashed at shipper's premise.



Tandem lift of Machinery Deck at Port Klang.



Machinery Decks after being loaded and secured onto Flat-Racks.

Cargo	: Pedestal cranes
Port of Loading	: Port Klang, Malaysia
Port of Discharge	: Various China ports
Total Shipments	: 9
Total Containers	: 42x40'FR & 37x40'OT
Total Gross Weight	: Approx. 600 M/Tons

In the second half of 2015, CNC Freight Services Services Sdn. Bhd. handled several EXW door-to-door and door-to-port shipments of Pedestal Cranes from Port Klang to various China ports namely, Shanghai, Shekou, Nantong and Xiamen.

Our operation team worked diligently around the clock to complete the delivery from shipper's premise to Port Klang sometimes in excess of 8 special containers per day which includes container stuffing.

The larger Machinery Deck piece had to be transported loose and stuffed within Port Klang due to its height and road fixture restrictions enroute from shipper's premise to port.

Our customer was immensely satisfied with CNC's dedication and commitment.

Skid-Mounted Modular Process Systems ex Port Klang to Abu Dhabi – July, 2016.



Surge vessel loaded on lowbed at shipper's premise.



Condensate pump skid before departing to Port Klang.



Stuffing of smaller pressure vessels and accessories into OT container.



Gas heat exchanger skid after stuffing into 40'FR container.

Scope of Work	: Door to Door
Port of Loading	: Port Klang, Malaysia
Port of Discharge	: Abu Dhabi, UAE
Cargo	: Process System Skids
Total Containers	: 7x40'FR, 2x40'OT & 4x40'HC
Total Gross Weight	: Approx. 100 M/Tons

In July 2015, CNC Freight Services Sdn. Bhd. was nominated to arrange door-to-door shipments of Skid-Mounted Modular Process Systems from Gebeng, Kuantan to Oxy's Block 62 jobsite in Northern Oman which was transported in two separate shipments.

CNC team up with fellow GPLN/THLG member, Consolidated Shipping Services in Dubai who handled the delivery from Oman port up to jobsite.

Through careful supervision and close coordination between with partner, the cargoes were delivered and handed over smoothly to consignee in good condition.

Network Meetings & Social Events.



WWPC at Fuengirola, Spain – May, 2015.



Breakbulk Antwerp at Tuscor Lloyd's booth – May, 2015.



Our Sports Club up at the peak of Gunung Nuang – October, 2015.



Ulu Jelai HEP site visit by CNC Project Team – October, 2015.
(L to R: Khoo, Patrick, Heng, & Hazar)

Staff Training & Development.

We always encourage our staff to participate in training seminars. As part of our employee knowledge enrichment programme, our staff have attended the following courses:

1. Building Confidence and Improving Communication – November, 2015.
Attended by: Mr. Lionel Lim (Executive).
2. Understanding GST in Accounting System – March, 2015.
Attended by: Ms. Agnes Ng (Accounts) & Ms. Jolyn Yew (Accounts).